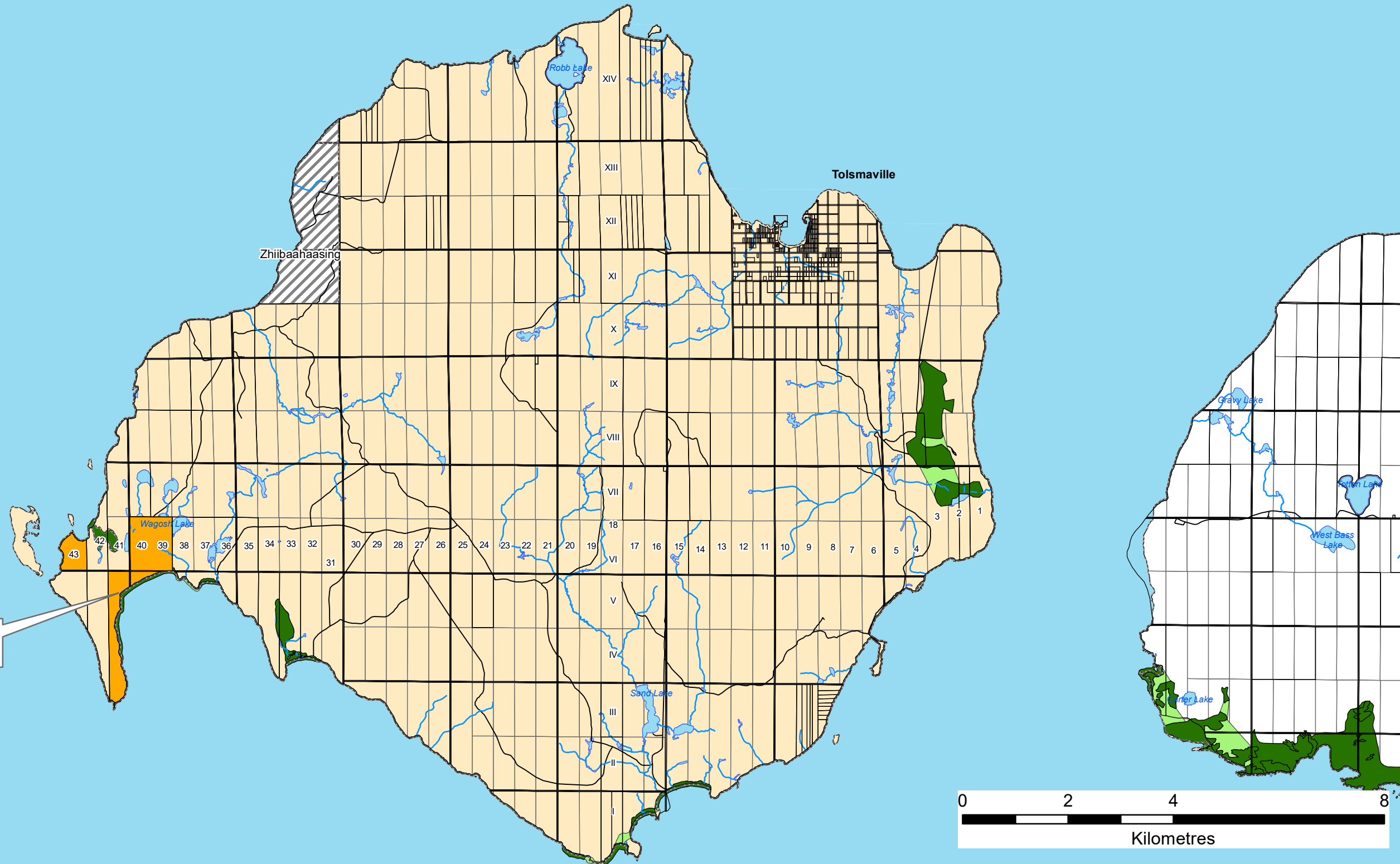


N



Map Produced November 11th 2021

**District of Manitoulin  
Official Plan  
Cockburn Island  
Natural Heritage and  
Open Space System  
Draft Mapping**

**Legend**

- Highway 6
- Secondary Highway
- Local Road
- First Nation Reserve
- Manitoulin Planning Area
- Municipal Boundary
- Urban Settlement Boundary
- Provincial Park
- Proposed Provincial Park
- Water Body
- Conservation Reserve
- Geographic Township

**Natural Heritage System**

- NHS Open Space Candidates
- NHS Core Area Candidates
- NHS Linkage Candidates

Mapping of Core Areas, Linkages and Open Space Areas for the Natural Heritage System is general in nature and based on data available for Natural Heritage Features. Precise scaling of this mapping should not be made.

This mapping is in draft form and significant changes may be made as new data becomes available and public input is received.

